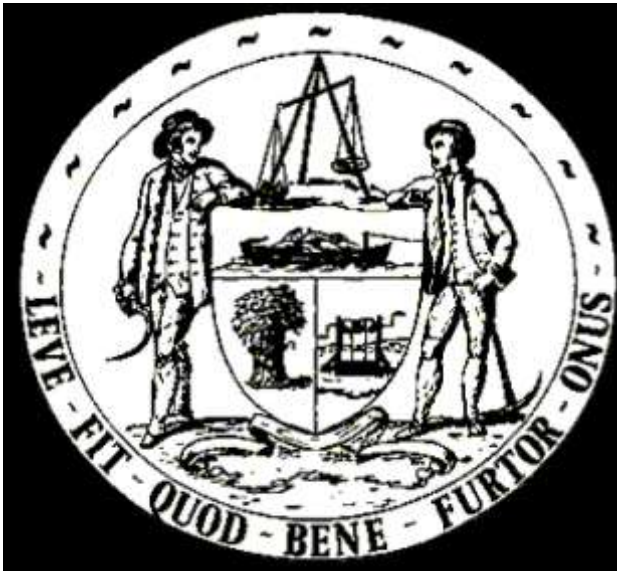


# SLEAFORD NAVIGATION TRUST



46

**Autumn 2015**

---

---

## The Sleaford Navigation Trust: -

... is a non-profit distributing company limited by guarantee, registered in England and Wales (No. 3294818)

... has a Registered Office at Island House, Moor Road, Chesham. HP5 1WA.

... is registered as a Charity (No. 1060234)

... has a web page: [www.sleafordnavigation.co.uk](http://www.sleafordnavigation.co.uk)

---

---

## Aims & Objectives

The Trust aims to stimulate public interest and appreciation of the history, structure and beauty of the waterway known as the Slea, or the Sleaford Navigation. It aims to restore, improve, maintain and conserve the waterway in order to make it fully navigable. Furthermore it means to restore associated buildings and structures and to promote the use of the Sleaford Navigation by all appropriate kinds of waterborne traffic. In addition it wishes to promote the use of towpaths and adjoining footpaths for recreational activities.

---

---

## Newsletters

To request an email version contact:

*[sleaford.navigation@ntlworld.com](mailto:sleaford.navigation@ntlworld.com)*

## Articles

*[debbie\\_scott@btopenworld.com](mailto:debbie_scott@btopenworld.com)*

9 Forum Way,

Sleaford NG34 7FF

---

---

Articles and opinions in this newsletter are those of the authors concerned and do not necessarily reflect SNT policy or the opinion of the editor

---

---

Our thanks to Westgate Print of Sleaford for their help with printing

---

---

## Editorial

Welcome to newsletter number 46

The mystery of why we rarely receive contributions to the newsletter apart from those from SNT Committee members has been solved! Oh, dear, the Editor's email address has been inadvertently misprinted. Please feel free to re-send any articles; if they are topical or still of historic interest we would like to use them.

The deadline for the next issue, Winter 2015, will be 1st December, with all contributions being as usual most welcome.

Please contact [sleaford.navigation@ntlworld.com](mailto:sleaford.navigation@ntlworld.com) to access the members' section of the web site where it is possible to download current and past editions of the Trust Newsletter

*Debbie Scott, Editor*

<b>Contents</b>	<b>Page</b>
Norman Osborne	4
Sleaford Lift Bridge	6
South Kyme Boat Gathering	7
Heckington Show	10
Water Framework Directive	12
Winter Social at the Barge & Bottle 28th November	14
Inland Waterways Association Raffle 2015	16
CRT Richard Parry's Visit to Sleaford	17
New members	18
Lincolnshire Co-operative Community Champions	19
A surprising things you probably didn't know about	19
SNT Work Party contact details	19



Photo: S Sowerby

### **Norman Osborne**

It is with great sadness that we have to report the sudden death of Norman Osborne on Monday June 8th. Norman was well known to, and respected by, so many people for his enthusiasm, commitment and brilliant sense of humour. A regular attendee at Work Parties, he had been involved with the Trust, and the Society before it, since their inception.

The committee agreed that this notice should be a brief collection of happy memories, not a formal obituary. These are only a few of the very many incidents that came to mind.

Norman certainly had a wry sense of humour. This came to the fore in one of the Trust work parties when he was in a dinghy with Dave Pullen at the bottom end of Taylors Lock. They were trying to gauge the depth of water with Dave using the probe and Norman handling the ropes to keep the boat in place. The probe stuck and Dave's pulling on it caused the stern to dip and he became alarmed at the potential for water to flood into the boat. When he called out to Norman that his end was sinking, the reply came back, "Keep going. It's all right at my end!"

An improvised method for checking and dispersing silt involved moving the Taylors Lock landing stage and using a water pump. This occasioned some hilarity and a certain amount of mud splash among participants. Covered in mud and grinning broadly Norman exclaimed that he hadn't had fun like that for ages!

When during a monthly work party at Cogglesford Lock he heard that the millers had a problem with a broken drive shear pin at Cogglesford Mill, Norman went to investigate, went home for a replacement part and helped effect a repair. Solving a problem was second nature to him and what he loved doing.

He was just a thoroughly nice chap who would go out of his way to help anyone whenever he could.

He is, and will continue to be, sorely missed.

Sincere condolences go to his wife Jenny, son David and daughter -in-law Maxine.



Norman (far right) and friends clean up at Cogglesford 2000.  
Photo:Foxtography

# Sleaford Lift Bridge

Just after we went to print with the last newsletter, we spotted a Highways engineer putting the lift bridge through its paces during one of the County Council's periodic inspections.

Thankfully everything worked according to plan again and the bridge was lowered to allow pedestrians to pass by after a few minutes.



Photos: D Scott

Looking forward to seeing the lifting being a regular occurrence, to let boats through!



## South Kyme Boat Gathering 2015.

The weather could certainly have been kinder but there was no lack of warmth in the welcome for boaters in South Kyme over the May Day weekend. Some boats had travelled from nearby waters but others had joined the gathering from further afield. One had made his way single-handed from Stafford while another had travelled from March, a lot further by canal than by road. The members of the Australian Canal Society who joined us could certainly have had the long-distance cruising award if their journey had been entirely by narrow-boat but that proved not to have been the case!



Photo: D Carnell

The Scarecrow Competition proved very difficult to judge because of the quality of the entries but Chris Hayes and Sue Sowerby were ably assisted by Sue Smith, one of our Australian visitors. The winner of the nursery rhyme themed competition was a very dapper Pussy-Cat who had travelled up to London complete with A-Z. Second place Dr Foster's travels were less successful as he sank "up to his middle" and third place Little Bo Peep had an empty pen from which her rather sweet sheep had escaped. Highly commended was Little Miss Muffet and her rather fetching spider. (We later found out that they had been made by a couple from Sheffield visiting the village for a weekend break who had heard there was a competition and had brought their entry in the car with them.)

Such was the wind in the afternoon that the ducks in the duck race went backwards and the start line became the finishing line! Saturday evening's BBQ was fun but COLD and there was rain overnight and into Sunday. Nevertheless there was a good congregation for the Boaters' Church Service and by the time we had all consumed an excellent lunch in The Hume the sun was out for the trip up to Cobblers Lock.

Thanks to all those who took part in the gathering and a big thank you too to the people of South Kyme for welcoming us into their village once more.

Photos: D. Carnell



On our way to Cobblers Lock with guests





Above: Sunday Lunch at the Hume Arms.

Below: Summer BBQ at South Kyme



Thanks to all those who took part in the gathering and a big thank you too to the people of South Kyme for welcoming us into their village once more.



## Heckington Show

Apparently Heckington Show is the biggest village agricultural show in the country, a fact few visitors to the event would challenge. It has an amazing variety of stalls, marquees, entertainment in the ring plus the traditional showing of a wide variety of animals.

The Trust has been invited to have a promotional and sales stand at the show for many years now and this year saw us again

in the Heritage Marquee. The range of groups and societies represented there was a reminder of the diversity of Lincolnshire history. The Sir Joseph Banks Society, The Friends of Lincoln Tank, Sleaford Museum, Heckington Windmill Trust, The Lincolnshire Family History Society all gave a fascinating insight into the different ways in which Lincolnshire and its residents had made an impact on society over the years.

Several stalls had activities for children, of all ages, to undertake and parents were seen gingerly holding decorated clay tiles, corn dollies and much more. Steve's dragonflies proved very popular,

so much so that he nearly ran out of cord to make them! Painting canal roses on paper plates attracted quite a few budding artists (pun not intentional!). It was really gratifying that one mum posted on Facebook how much her children had enjoyed both activities.



Pat and her various assistants also had a very successful two days raising funds for the Trust with sales of Sleamemorabilia and bric-a-brac.

Those funds are very important but events like this also give an opportunity for people to learn more about the Trust and the navigation. Some visitors to the stall still say, "I had no idea there was a canal near Sleaford" and "I really didn't realise you had done all that!" Overall there was a great deal of support for the restoration and recognition of the impact it would have on Sleaford. We were also quite surprised by the number of enquiries about canoeing and kayaking on the Slea from people of all ages. Approval was definitely given there for the Destination South Kyme project.

Thanks to Heckington Show Committee for inviting us, to all those who helped man the stall and to our many visitors.

## Water Framework Directive

On Tuesday 12 May David Hutchinson from the Environment Agency attended the AGM of the Slea Navigation Trust to talk about the Water Framework Directive and what it means for the Slea and the Kyme Eau. He explained that the Directive is a piece of European Legislation that sets ambitious targets for improving ecology and water quality on our surface, ground and coastal water bodies.

The River Slea is split into two different sections or water bodies for the purpose of classification. These are the Slea from Ancaster to Cobblers Lock and the Kyme Eau from Cobblers Lock to the Witham. Both of these sections have sample points for chemical water quality as well as sites where the ecology (e.g fish and invertebrates) is surveyed. The diagram below shows how these two sections were classified using the most recent (2014) information. The Slea was classified as being as poor and the Kyme Eau as moderate. The Water Framework Directive requires these to be at Good by 2027.

The data shows that in general water quality is good on the Slea although as it can suffer from low flows during the drier summer months. This can affect the fish and invertebrate populations as well as the levels of oxygen in the water. By contrast, the Kyme Eau, further downstream, has higher levels of nutrients in the water. Phosphate is a particular problem and is the primary cause of excessive weed growth on lowland rivers across the country. The graph below shows recorded phosphate levels on the Kyme Eau over the last 15 years being well above the target level for good water quality (represented by the horizontal redline). Phosphate can enter rivers from sewage treatment works and diffuse agricultural pollution. Despite this fish surveys have shown some very good populations of coarse fish at Chapel Hill in recent years with good heads of bream, pike, roach and perch in particular.

Figure 1 – Water Framework Directive Classification on the Slea and Kyme Eau

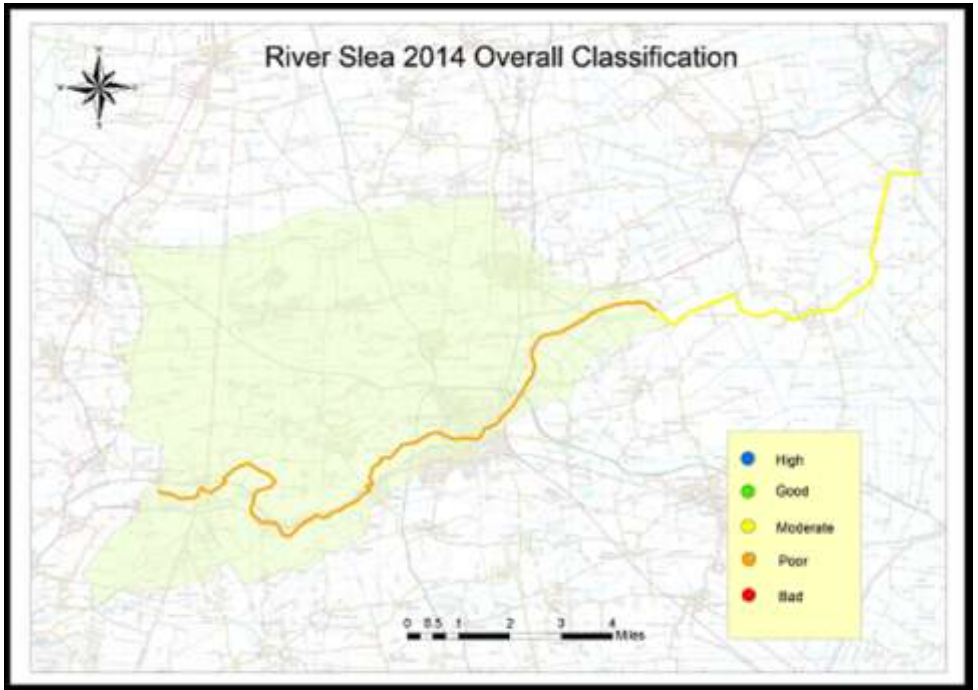
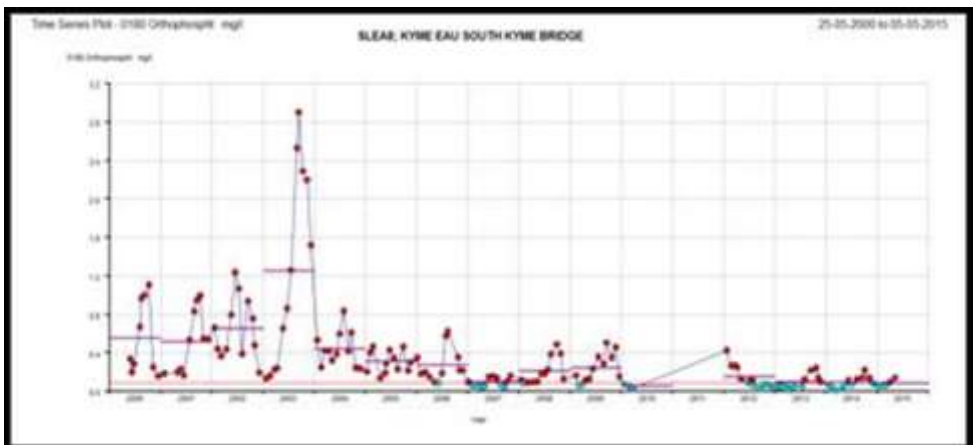


Figure 2 – Phosphate concentrations at South Kyme Bridge 2000 -



## Water Framework Directive continued...

Meeting the requirements of good status will be a huge challenge however, a great deal of ongoing work and new initiatives are being undertaken to help address the underlying causes. This includes projects to improve river habitat, working with the agricultural sector on issues such as pollution prevention and helping to target water company investment for environmental improvement in the areas where it is most needed. The government has also introduced the catchment based approach to further help tackle these issues by bringing together interested groups and organisations on a catchment scale in more joined up way. The Lincolnshire Rivers Trust are leading the Witham Partnership Group with support from other groups including the Environment Agency, Canal and Rivers Trust and the Sleaford Navigation Trust.

**Winter Social at the  
Barge and Bottle,  
Sleaford  
Saturday 28th  
November  
at 7.00 pm for 7.30  
pm.**



**RSVP Essential**

Following the success of last year's meal, we would like to invite all SNT members and friends to join us again.

Please see the menu on the facing page, and to book your place, please make your choices and send details with £5 deposit (chqs made payable to Sleaford Navigation Trust) per person to

SNT c/o Debbie Scott, 9 Forum Way, Sleaford NG34 7FF

Last date for bookings: Saturday 21st November

**Choices at the Barge & Bottle this year include a selection of meals at £12 for 2 (£6.95 each if ordered separately) as well as a full range of steaks, Barge favourites and Gourmet Burgers**

For full details of the current menu, see their website  
**[www.thebargeandbottle.co.uk](http://www.thebargeandbottle.co.uk)**

To whet your appetite, the 2 for £12 meals on offer are

- 6oz Rump Steak, served with mushrooms, chips and peas
- Homemade Cottage Pie, served with carrots, peas and gravy
- Ham, Egg and Chips, served with peas
- Quiche (vegetarian) served with salad and chips
- 5oz Gammon Steak, served with egg, pineapple, chips and peas
- Fish Francais - strips of haddock coated and pan-fried, served with salad and chips
- Sausage and Mash, served with peas and onion gravy
- Half Rack of Ribs, served with chips
- All Day Brunch - 2 bacon, 2 sausages, 2 eggs, mushrooms, chips and beans

If you are choosing a steak - please specify how you want it done.

## IWA Raffle



The Inland  
**Waterways**  
Association

*Keeping our waterways alive!*

Sleaford Navigation Trust raised £190.00 from the 2014 IWA raffle (participating waterways restoration projects earn a percentage of the proceeds depending on how many tickets they sell ) and we'd like to beat that this year. By now you should have found a book of raffle tickets inside this newsletter, please do complete the stubs and return them to IWA as per the instructions on the reverse, before 31st December 2015.

Alternatively you can buy tickets online

[https://www.waterways.org.uk/support\\_us/raffle/buy\\_affle\\_tickets](https://www.waterways.org.uk/support_us/raffle/buy_affle_tickets)

Don't forget to nominate Sleaford Navigation Trust!

Prizes this year include a veritable cornucopia of waterways-related goodies including

**First Prize:** A one-week boating holiday on a six-berth narrowboat with Wyvern Shipping, worth up to £1,500.

**Second Prize:** A three-night or four-night boating holiday on a four-berth narrowboat with Andersen Boats, worth up to £700.

**Third Prize:** A weekend boating holiday on a four-berth narrowboat with Canal Cruising Company, worth £590.

**Fourth Prize:** A two-night boating break in March 2016, on a two-berth boat with Cambrian Cruisers, worth £559.



**Fifth Prize:** A one-night boating holiday on up to a four berth boat with Calcutt Boats, worth up to £300.

**Sixth Prize:** A one-day boat hire with ABC Leisure for up to 12 people in 2016.

**Seventh Prize:** A pair of 2016 Crick Festival weekend tickets, with a choice of free campsite or mooring pitch, from Waterways World.

**Eighth Prize:** £100 of vouchers for Midland Chandlers.

**Ninth Prize:** A 12 month subscription to Canal Boat plus a copy of each of their books which include the Canal Boat Buyers Guide, A to Z of Marina's, Map of the Waterways and Maintaining your Canal Boat, from Archant Ltd

**Tenth Prize:** A small jug handpainted in the traditional narrowboat style, from Stone Boat Building Chandlery.



## A VIP visitor to the Sleas

The Sleaford Navigation is not a Canal & River Trust waterway but when we learned that their CEO, Richard Parry, was coming to Lincoln for a meeting on May 14<sup>th</sup>, it seemed a good opportunity to invite him to have a look at Sleaford and the navigation. We were delighted when he agreed to spend the morning of May 15<sup>th</sup> with us.

He visited Navigation House to learn some of the history of the navigation and met with Alan Gray, Economic Development Manager for NKDC.

After a walk down to Cogglesford via the slipway and lift bridge we travelled on to Haverholme and then to South Kyme by way of Halfpenny Hatch and Church Bridge. We showed Richard the site of the proposed Water Access before lunch in The Hume.

Richard made several interesting suggestions around ways of promoting the Navigation and confirmed his support for what we were doing. His approach as CEO is very much hands-on and it was good to have the chance to show him what had been achieved and get his thoughts on what is yet to be done. We very much appreciate his making time out of an extremely busy schedule to visit us.



Photo: S. Hayes

Richard Parry CEO Canal and Rivers Trust, with Chris Hayes outside No 1 Navigation Yard, aka Navigation House, meeting Alan Gray, right (NKDC)

**New Members : We are delighted to welcome  
Kevin Osborne as a new SNT member!**

If you are thinking of joining please do get in touch or pick up a membership application form from events or Navigation House in Sleaford. If you are already a member and would like to upgrade to paying by Standing Order please contact Jenny Osborne on 01526 832256. The saving in postage for reminders and trips to the bank will be much appreciated by the Trust and helpers.

## Surprising things...

Navigation House recently reported that an SNT bookmark had been sold by mail order to a Mr Hart who runs the Leather Bookmark Club. On further investigation it appears that this is a well established club whose display collection contains 23,000 different leather bookmarks from around the world!

The club's website, [www.leatherbookmarks.co.uk](http://www.leatherbookmarks.co.uk), explains 'The club was started in 1989 and has members from UK so far. They welcome members from all over the world, and membership is free. The intention is to promote the collection of leather or leather board bookmarks from any part of the world. The members collect all types, cities, towns, places of interest, attractions, events, charities and organisations. They run a free "swapping" service for all collectors.'

## And more ££££££££££

Don't forget to pick Sleaford Navigation Trust as your community group! Lincolnshire Co-op members can choose their own Community Champion from the Central List. To choose SNT to have your community divi, see [www.lincolnshire.coop](http://www.lincolnshire.coop)



SNT Work Parties go on throughout the year, usually on the second Sunday of the month. Contact Mel Sowerby (01522 856810 or [sowerbys@ntlworld.com](mailto:sowerbys@ntlworld.com)) for details of upcoming dates and activities

## Committee Contacts

Chairman	Chris Hayes 10 Chelmer Close , North Hykeham, Lincoln LN6 8TH Tel: 01522 689460
Secretary	Steve Hayes— Contact as above
Treasurer	Penny Carnell Conifer Cottage, Northend, Goxhill, South Humberside, DN19 7JX Tel: 01469 530138
Engineer	David Pullen Brinkburn House, Church Street, Scothern, Lincoln LN2 2UA Tel: 01673 862278
Director / Newsletter Editor	Debbie Scott Tel: 01529 305755 / 07973 330765
Director	Susan Sowerby Tel: 01522 856810
Director / Sales	Pat Taylor Tel: 01522 790652
Director / LincsIWA Nominee	David Carnell Tel: 01469 530138
Director / Work Party Organiser	Mel Sowerby Tel: 01522 856810

## Membership

Membership Secretary	Jenny Osborne, Bank House, Ruskington Fen, Billinghay, Lincoln, LN4 4DS Tel: 01526 832256
----------------------	---

Sleaford Navigation Trust is a member of the Sleaford Sports  
Partnership (SSP)

All SNT members are automatically SSP members, and are welcome to join in any of the SSP events, which are all held at the David Williams Pavilion, Sleaford Rugby Club, Ruskington Road, Sleaford. Further details available from Barbara on 01529 303749

